

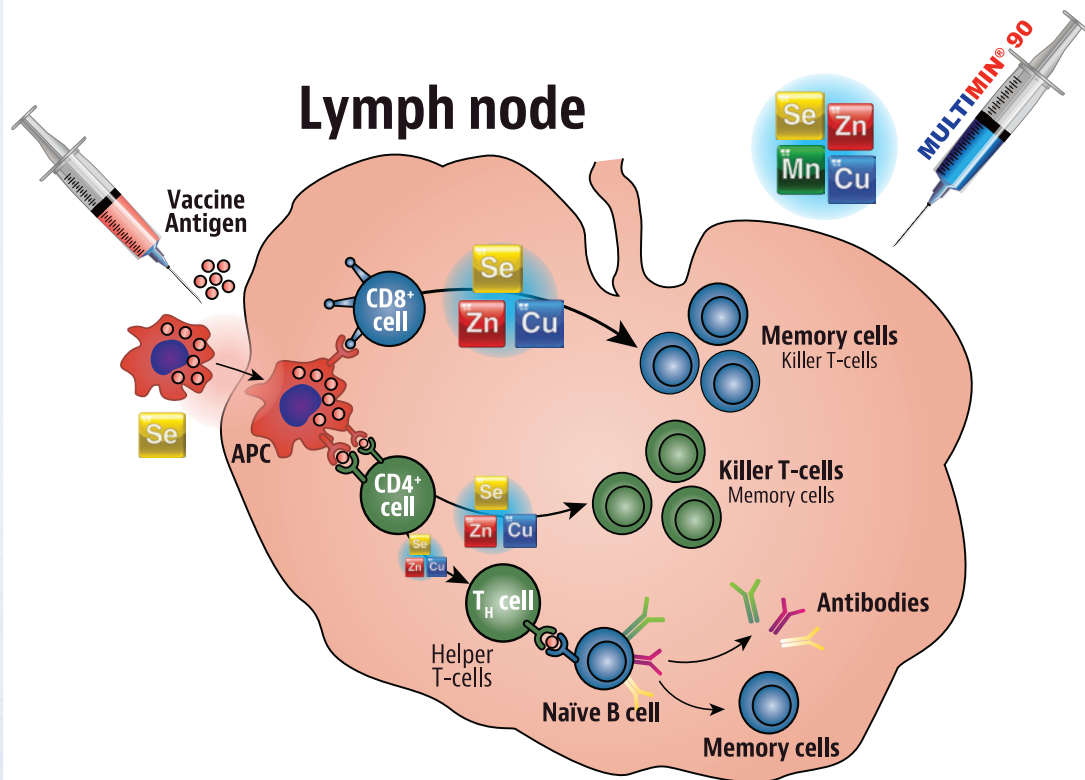


*& Vaccines*

Sure Trace Mineral Supply By Timed Injection™

[www.MULTIMINUSA.com](http://www.MULTIMINUSA.com)

# CATTLE DO ALL THE WORK FOR A VACCINE TO PROTECT

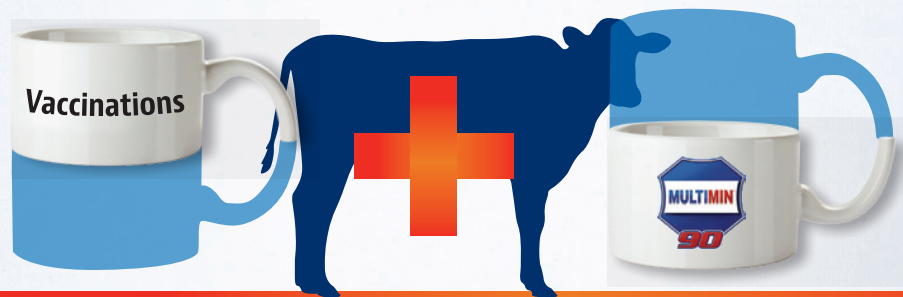


References available on request.

1

UNIVERSITY STUDIES SHOWED DAIRY & BEEF CALVES TREATED WITH **MULTIMIN<sup>®</sup> 90** AT THE SAME TIME AS VACCINES HAD:

- ✓ Faster immune response
- ✓ Higher measurable antibody titers and cell-mediated response



2

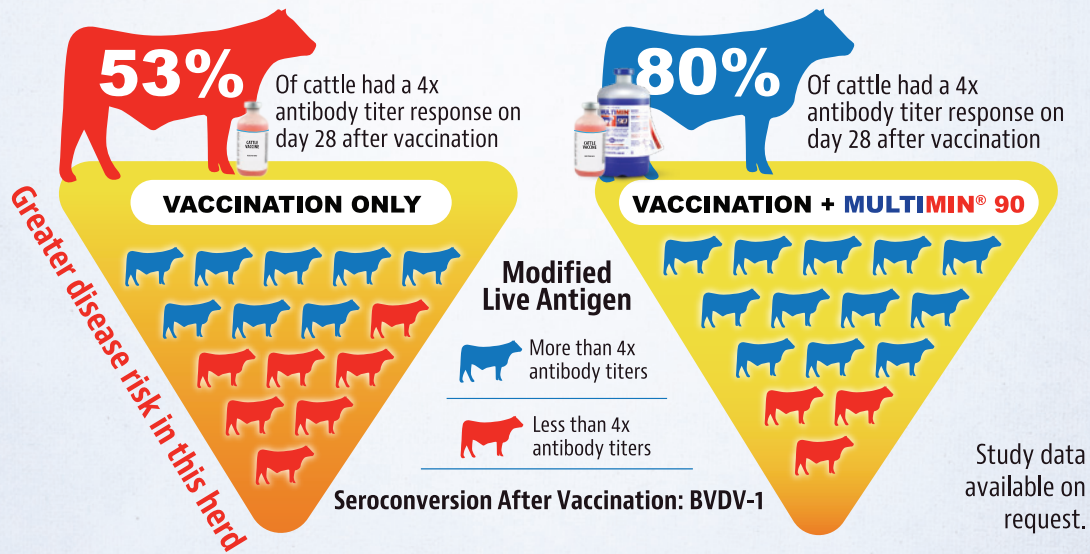
UNIVERSITY STUDIES SHOWED CALVES  
TREATED WITH **MULTIMIN® 90** AT THE SAME  
TIME AS VACCINES HAD MORE OF THE  
POPULATION RESPOND TO THE VACCINE

## You Are Buying Vaccines. WHAT DO YOU WANT OUT OF IT?

←  
This Herd?

OR

→  
This Herd?





# 3

**UNIVERSITY STUDIES HAVE SHOWN WHEN CALVES ARE INFECTED WITH VIRUSES THAT THEY WERE VACCINATED AGAINST, THE CALVES THAT RECEIVED **MULTIMIN® 90**, WITH THE VACCINE HAD:**

- ✓ Enhanced immune protection
- ✓ Less severe disease
- ✓ Less depression of platelets
- ✓ Greater average daily gain following challenge



**Rx REQUIRED**

# 4

New Study!

## HELPING HEIFERS PRODUCE BETTER COLOSTRUM

Trace minerals in heifers are critical for:

- ✓ Late-gestation calf development
- ✓ Proper vaccine response in heifers
- ✓ Improved colostrum production
- ✓ Healthier calves



Calves receive more specific antibodies for better scours protection

Data on file.

## MULTIMIN® 90 IS A FAST-ACTING SOURCE OF TRACE MINERALS



**Rx** REQUIRED



**Zinc**  
(60mg/ml)



**Selenium**  
(5mg/ml)



**Copper**  
(15mg/ml)



**Manganese**  
(10mg/ml)

### WHY AN INJECTABLE?

1. Peak plasma levels within 8-10 hours
2. Bypasses antagonists in the rumen
3. Every animal injected is supplemented

Learn More



[www.multiminusa.com](http://www.multiminusa.com) | [www.savethelung.com](http://www.savethelung.com)

# Q&A

## MULTIMIN® 90 co-use with vaccines

Can you give **MULTIMIN® 90** at the same time as vaccines?

**YES**

Did you know that modified live vaccines impact the trace mineral status of recently vaccinated animals?

Study data indicated that an injection of **MULTIMIN® 90** at the same time as vaccination maintains/improves animal's trace mineral status

What classes of vaccines has **MULTIMIN®** showed an improved immune response to in research trials?

Killed vaccines

Attenuated-live bacterins

Intra-nasal vaccines

Modified live respiratory and reproductive virus vaccines

Inactivated multivalent scour vaccine

KEEP OUT OF REACH OF CHILDREN

# MULTIMIN<sup>®</sup> 90

An injectable aqueous supplemental source of zinc, manganese, selenium, and copper

**CAUTION: FEDERAL LAW RESTRICTS THIS DRUG TO USE BY OR ON THE ORDER OF A LICENSED VETERINARIAN.**

## ACTIVE SUBSTANCES PER ML:

Zinc..... 60 mg/mL  
Manganese..... 10 mg/mL  
Selenium..... 5 mg/mL  
Copper..... 15 mg/mL

## OTHER SUBSTANCES:

Chlorocresol 0.1% w/v (as preservative).

## DOSAGE RECOMMENDATIONS:

CALVES: Up to 1 year ..... 1 mL/per 100 lbs. bodyweight  
CATTLE: From 1-2 years ..... 1 mL/per 150 lbs. bodyweight  
CATTLE: Over 2 years..... 1 mL/per 200 lbs. bodyweight

## PRECAUTION:

Selenium and copper are toxic if administered in excess.

Always follow recommended label dose.  
Do not overdose.

It is recommended that accurate body weight is determined prior to treatment.

Do not use concurrently with other injectable selenium and copper products.

Do not use concurrently with selenium or copper boluses.

Do not use in emaciated cattle with a BCS of 1 in dairy or 1-3 in beef.

Consult your veterinarian.

## CAUTION:

Slight local reaction may occur for about 30 seconds after injection. A slight swelling may be observed at injection site for a few days after administration. Use standard aseptic procedures during administration of injections to reduce the risk of injection site abscesses or lesions.

## WITHDRAWAL PERIOD:

Meat 14 days. Milk zero withdrawal.

## DIRECTIONS:

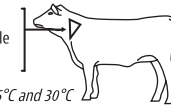
This product is only for use in cattle.

MULTIMIN<sup>®</sup> 90 is to be given subcutaneously (under the skin) ONLY.

It is recommended to administer the product in accordance with Beef Quality Assurance (BQA) guidelines. Minimum distance between injection sites for the MULTIMIN<sup>®</sup> 90 product and other injection sites should be at least 4 inches.

Inject under the loose skin of the middle of the side of the neck. Max volume per injection site is 7 mL.

Subcutaneous injection in middle of side of neck.



Store Between 15°C and 30°C  
(59°F and 86°F).

## DOSAGE TABLE

ANIMAL WEIGHT (lbs)	CALVES UP TO 1 YEAR 1 mL/100 lb BW	CATTLE 1 - 2 YEARS 1 mL/150 lb BW	CATTLE > 2 YEARS 1 mL/200 lb BW
50	0.5 mL	-	-
100	1 mL	-	-
150	1.5 mL	-	-
200	2 mL	-	-
300	3 mL	-	-
400	4 mL	-	-
500	5 mL	-	-
600	6 mL	-	-
700	7 mL	-	-
800	-	5.3 mL	-
900	-	6 mL	-
1000	-	6.6 mL	5 mL
1100	-	-	5.5 mL
1200	-	-	6 mL
1300	-	-	6.5 mL
1400	-	-	7 mL

## SUPPLEMENTATION PROGRAM

BULLS	3 times per year
BEEF COWS	4 weeks before breeding 4 weeks before calving
DAIRY COWS	4 weeks before calving 4 weeks before insemination at dry-off
CALVES	at birth at 3 months and/or weaning
HEIFERS	every 3 months – especially 4 weeks before breeding
(program gives planned dates that can be varied to suit management programs)	



MANUFACTURED FOR:  
**MULTIMIN**  
NORTH AMERICA, INC.  
Fort Collins, CO 80528

TAKE TIME  OBSERVE LABEL DIRECTIONS

Packaged in 100 mL & 500 mL size

NDC No. 49920-006-01  
NDC No. 49920-006-05



# CALL YOUR MULTIMIN<sup>®</sup> USA REPRESENTATIVE NOW

Todd Alford (FL, GA) 706.207.9454  
todd@multiminusa.com

Cortney Blasingame (AZ, CA, West NV) 559.906.2618  
cblasingame@multiminusa.com

Joe Brown (IL, MO) 417.848.5755  
jbrown@multiminusa.com

Marnie Caldwell (NC, SC, VA, WV) 540.460.4707  
marnie@multiminusa.com

Thomas Carper (IN, KY, MI, OH) 540.336.2737  
tcarper@multiminusa.com

Sheri Chapman (AL, MS, TN) 334.352.5062  
sher@multiminusa.com

Chip Gasser (ID, East NV, UT) 208.569.1099  
cgasser@multiminusa.com

Jill Ginn (West TX, NM) 806.570.6185  
jill@multiminusa.com

Brian Harberd (WA, OR) 208.316.3168  
bharberd@multiminusa.com

Brad Shumaker (AR, LA) 901.463.0059  
brad@multiminusa.com

Corey Weber (Tulare County, CA) 559.210.4268  
corey@multiminusa.com

Ashley Hughes (East TX) 772.342.4153  
ashley@multiminusa.com

Hannah Garrett (NE) 970.520.5172  
hannah@multiminusa.com

David Link (CO, WY, MT) 303.588.2986  
davidlink@multiminusa.com

Al Schoenfeld (ND, SD) 605.690.7070  
aschoenfeld@multiminusa.com

Adrienne Bethel (East KS, East OK) 918.638.9865  
adrienne@multiminusa.com

Tim Thul (IA, MN) 952.500.0877  
tthul@msbiotec.com

Ddee Haynes (West KS, West OK) 580.772.4053  
ddee@multiminusa.com

Erin Wilkens (MI Pen, WI) 920.207.7502  
erin@multiminusa.com

Stacey Peterson (CT, DE, MA, MD, ME, NH, NJ,  
NY, PA, RI, VT) 570.881.6015  
stacey@multiminusa.com