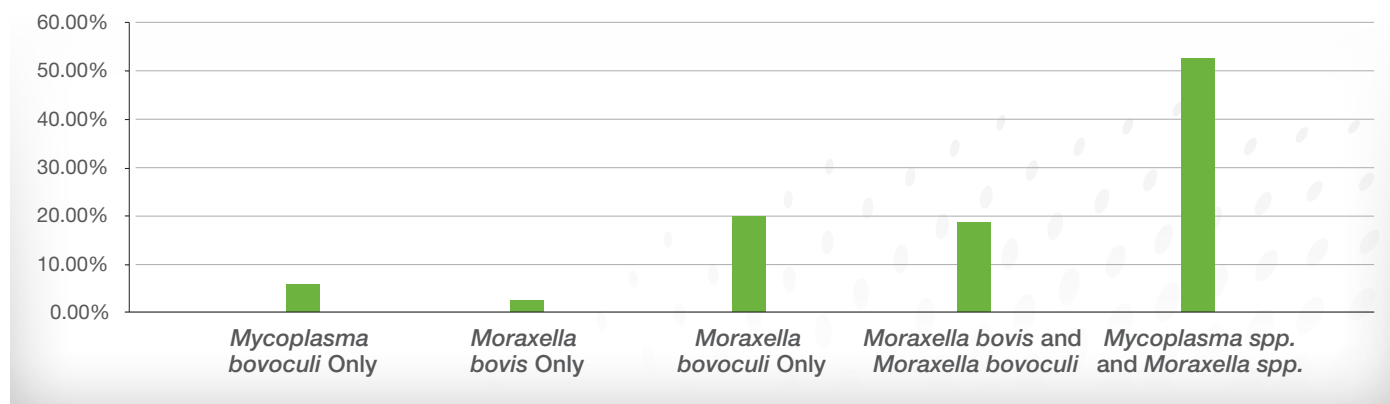


What is Causing Pinkeye in Your Practice? Are You Targeting ALL Potential Pinkeye Causes?

Phibro Animal Health Corporation cultured and identified agents from cases of pinkeye submitted by veterinarians for the year of 2019. As shown in the graphic below, *Moraxella bovis* and *Moraxella bovoculi* were the two primary pathogens recovered. *Mycoplasma bovoculi* was the third most common organism detected.

PERCENT OF PINKEYE CASES AT PHIBRO FOR THE YEAR OF 2019

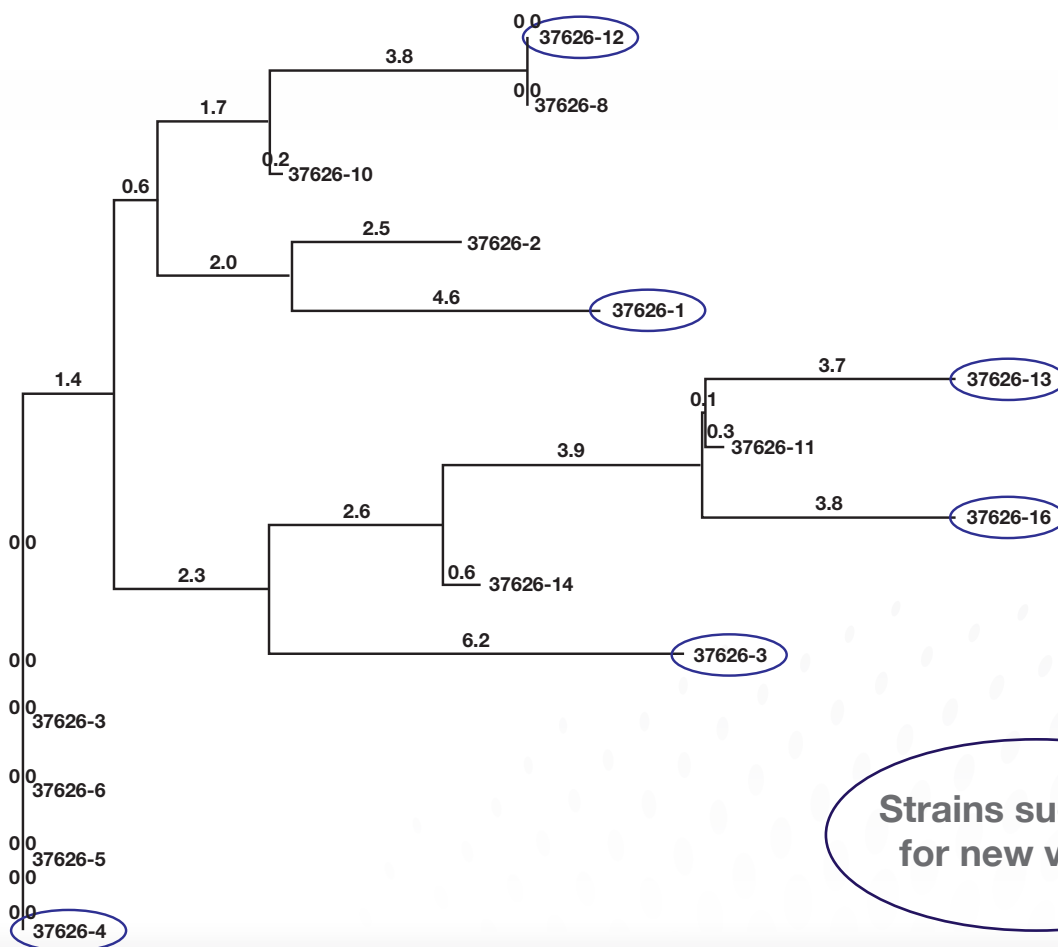


Diagnosis

To arrive at a diagnosis, and thus an isolate for bacterin production, the cornea or conjunctiva needs to be swabbed. It is important that the swabs do not dry out or become warm in transport. They should be placed in an appropriate media, in an insulated container with ice and shipped overnight delivery to Phibro together with a submission form.

Phibro Animal Health uses molecular approaches for identification, characterization and evaluation of field isolates. Phibro utilizes protein profiles and Enterobacterial Repetitive Intergenic Consensus (ERIC)-PCR to compare similar isolates to assist in isolate selection. A dendrogram showing the similarities and differences is then produced.

Example Dendrogram showing similarity in soluble protein profile between 14 *Moraxella bovoculi*



Strains suggested for new vaccine

To further evaluate virulence of the isolates, PCR can be used to check for factors such as pilus; a virulence gene associated with cytotoxin production and phospholipase B; a gene associated with an enzyme responsible for lysis of corneal epithelium.

Bacterin Production

Phibro Animal Health has developed state-of-the-art culture media and culture conditions to optimize the expression of antigens and virulence factors such as pilus and cytotoxins. Each isolate is grown independently and then blended into a Tailor-Made[®] bacterin. To enhance immunity, Phibro uses Emulsigen[®]-D, a proprietary and BQA friendly adjuvant for pinkeye bacterins.

Contact Us

4805 G Street
Omaha, NE 68117-1414

Email: pvolabs@pahc.com
Website: mvplabs.com

Telephone: 1.800.856.4648
Fax: 402.331.8776

*Potency and efficacy of autogenous biologics have not been established